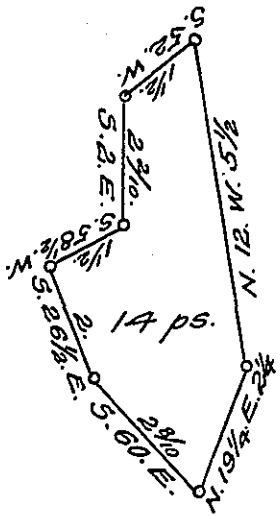


York County shore



Lancaster County shore

A Draught of Beaver Island situate in the river Susquehanna in Manor township Lancaster County in the Turkey hill falls opposite the point of Turkey Hill on the Lancaster shore and opposite the mouth of Beaver run on the York shore containing fourteen perches Strict measure surveyed in pursuance of Warrant dated the 21st day of November A.D. 1811 granted to Jacob Geib and John Bear

p^s Jacob Hibshman D.S.

To Jacob Spangler Esq^r }
 Surveyor General. }

IN TESTIMONY that the above is a copy of the original remaining on file in the Department of Internal Affairs of Pennsylvania, made conformably to an Act of Assembly approved the 16th day of February 1833, I have hereunto set my hand and caused the Seal of said Department to be affixed at Harrisburg, this thirteenth day of December 1907

Henry Howell

Secretary of Internal Affairs.